

## **FCC Information and Copyright**

This equipment has been tested and found to comply with the limits of a Class B digital device, pursuant to Part 15 of the FCC Rules. These limits are designed to provide reasonable protection against harmful interference in a residential installation. This equipment generates, uses, and can radiate radio frequency energy and, if not installed and used in accordance with the instructions, may cause harmful interference to radio communications. There is no guarantee that interference will not occur in a particular installation.

The vendor makes no representations or warranties with respect to the contents here and specially disclaims any implied warranties of merchantability or fitness for any purpose. Further the vendor reserves the right to revise this publication and to make changes to the contents here without obligation to notify any party beforehand.

Duplication of this publication, in part or in whole, is not allowed without first obtaining the vendor's approval in writing.

The content of this user's manual is subject to be changed without notice and we will not be responsible for any mistakes found in this user's manual. All the brand and product names are trademarks of their respective companies.



**Dichiarazione di conformità sintetica**

Ai sensi dell'art. 2 comma 3 del D.M. 275 del 30/10/2002

Si dichiara che questo prodotto è conforme alle normative vigenti e soddisfa i requisiti essenziali richiesti dalle direttive

2004/108/CE, 2006/95/CE e 1999/05/CE

quando ad esso applicabili

**Short Declaration of conformity**

We declare this product is complying with the laws in force and meeting all the essential requirements as specified by the directives

2004/108/CE, 2006/95/CE and 1999/05/CE

whenever these laws may be applied

---

---

## Table of Contents

---

---

<b>Chapter 1: Introduction</b> .....	<b>1</b>
1.1 Before You Start .....	1
1.2 Package Checklist .....	1
1.3 Motherboard Features.....	2
1.4 Rear Panel Connectors.....	3
1.5 Motherboard Layout.....	4
<b>Chapter 2: Hardware Installation</b> .....	<b>5</b>
2.1 Installing Central Processing Unit (CPU).....	5
2.2 Install a Heatsink .....	7
2.3 Fan Headers .....	8
2.4 Installing System Memory.....	9
2.5 Connectors and Slots .....	11
<b>Chapter 3: Headers &amp; Jumpers Setup</b> .....	<b>14</b>
3.1 How to Setup Jumpers .....	14
3.2 Detail Settings.....	14
<b>Chapter 4: Useful Help</b> .....	<b>18</b>
4.1 Driver Installation Note .....	18
4.2 Software.....	19
4.3 BIOS Setup .....	21
4.4 Troubleshooting.....	24
4.5 RAID Function .....	26
<b>Appendix: SPEC In Other Languages</b> .....	<b>30</b>
German .....	30
French .....	32
Italian .....	34
Spanish.....	36
Portuguese .....	38
Polish .....	40
Russian .....	42
Arabic.....	44
Japanese.....	46

---

---

## **CHAPTER 1: INTRODUCTION**

### **1.1 BEFORE YOU START**

Thank you for choosing our product. Before you start installing the motherboard, please make sure you follow the instructions below:

- Prepare a dry and stable working environment with sufficient lighting.
- Always disconnect the computer from power outlet before operation.
- Before you take the motherboard out from anti-static bag, ground yourself properly by touching any safely grounded appliance, or use grounded wrist strap to remove the static charge.
- Avoid touching the components on motherboard or the rear side of the board unless necessary. Hold the board on the edge, do not try to bend or flex the board.
- Do not leave any unfastened small parts inside the case after installation. Loose parts will cause short circuits which may damage the equipment.
- Keep the computer from dangerous area, such as heat source, humid air and water.
- The operating temperatures of the computer should be 0 to 45 degrees Celsius.
- To avoid injury, be careful of:
  - Sharp pins on headers and connectors
  - Rough edges and sharp corners on the chassis
  - Damage to wires that could cause a short circuit

### **1.2 PACKAGE CHECKLIST**

- Serial ATA Cable x2
- Rear I/O Panel for ATX Case x1
- User's Manual x1
- Fully Setup Driver DVD x1

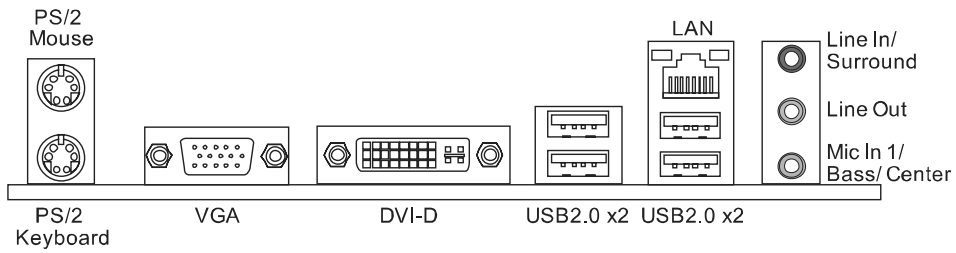
**Note:** The package contents may be different due to the sales region or models in which it was sold. For more information about the standard package in your region, please contact your dealer or sales representative.

## 1.3 MOTHERBOARD FEATURES

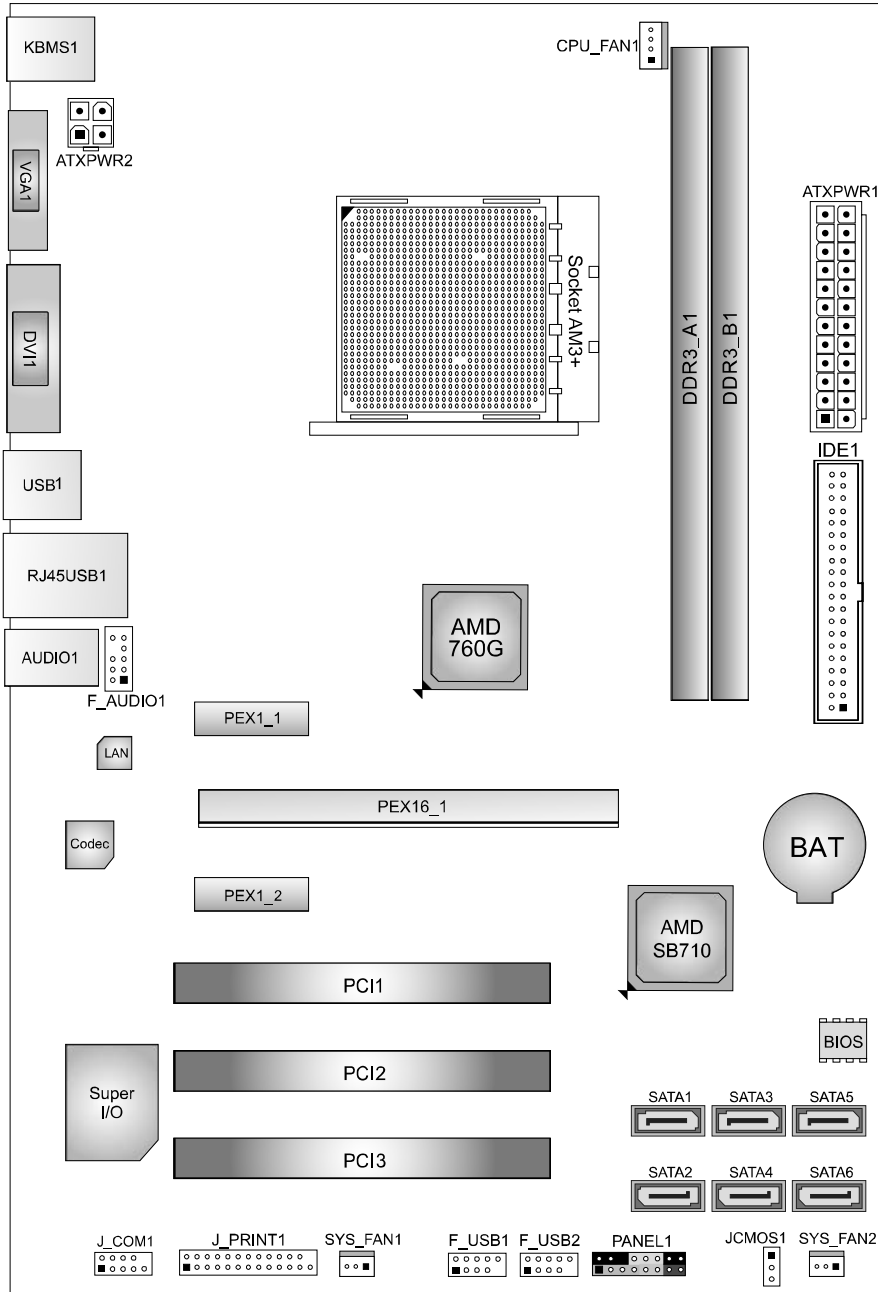
SPEC		
CPU	Socket AM3 / AM3+ AMD Sempron / Athlon II / Phenom II / FX processors (Maximum Watt: 125W)	AMD 64 Architecture enables 32 and 64 bit computing Supports Hyper Transport 3.0
FSB	Support Hyper Transport 3.0 Supports up to 4.4 GT/s Bandwidth	
Chipset	AMD 760G + AMD SB710	
Super I/O	ITE 8728F-BX Provides the most commonly used legacy Super I/O functionality	Low Pin Count Interface Environment Control initiatives H/W Monitor ITE's "Smart Guardian" function
Main Memory	DDR3 DIMM Slots x 2 Max Memory Capacity 16GB Each DIMM supports 512MB/1GB/ 2GB/4GB/8GB DDR3	Dual Channel Mode DDR3 memory module Supports DDR3 800/1066/1333/1600(OC)/1866(OC for AM3+ CPU only) Registered DIMM and ECC DIMM is not supported
Graphics	Integrated in AMD 760G Chipset	Max Shared Video Memory is 1024MB
SATA II	Integrated Serial ATA Controller	Data transfer rates up to 3 Gb/s SATA Version 2.0 specification compliant
LAN	Realtek RTL 8111F	10 / 100 / 1000 Mb/s auto negotiation
Sound	ALC662	5.1 channels audio out High Definition Audio
Slots	PCI Express X16 slot x1 PCI Express X1 slot x2 PCI slot x3	Supports PCI-E X16 expansion card Supports PCI-E X1 expansion card Supports PCI expansion cards
On Board Connectors	SATA Connector x6 IDE Connector x1 Front Panel Connector x1 Front Audio Connector x1 CPU Fan Header x1 System Fan Header x2 CMOS Clear Jumper x1 USB Connector x2 Power Connector (24pin) x1 Power Connector (4pin) x1 Serial Port Connector x1 Printer Port Connector x1	Each connector supports 1 SATA device Each connector supports 2 IDE device Supports front panel facilities Supports front panel audio function CPU Fan power supply (with Smart Fan function) System Fan Power supply Restore CMOS data to factory default setting Each connector supports 2 front panel USB ports Connects to Power supply Connects to Power supply Connects to RS-232 Port Each connector supports 1 Printer port
Back Panel I/O	PS/2 Keyboard x1 PS/2 Mouse x1	Connects to PS/2 Keyboard Connects to PS/2 Mouse

SPEC			
	DVI port	x1	Connect to DVI-D monitor
	VGA port	x1	Connect to D-SUB monitor
	LAN port	x1	Connect to RJ-45 Ethernet cable
	USB Port	x4	Connect to USB devices
	Audio Jack	x3	Provide Audio-In/Out and microphone connection
Board Size	200 mm(W) x 295 mm(L)		
Special Features	RAID 0 / 1 / 10 support		
OS Support	Windows XP / Vista / 7 / 8		Biostar reserves the right to add or remove support for any OS With or without notice.

## 1.4 REAR PANEL CONNECTORS



## 1.5 MOTHERBOARD LAYOUT



**Note:** ■ represents the 1st pin.

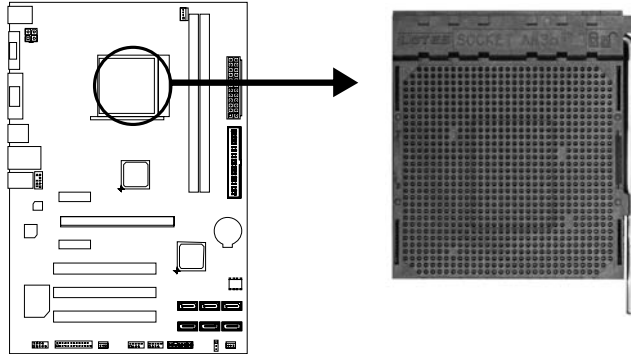
---

---

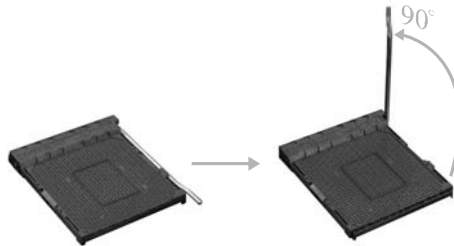
## **CHAPTER 2: HARDWARE INSTALLATION**

### **2.1 INSTALLING CENTRAL PROCESSING UNIT (CPU)**

**Step 1:** Locate the CPU socket on the motherboard



**Step 2:** Pull the socket locking out from the socket and then raise the lever up to a 90-degree angle.



**Step 3:** Look for the white triangle on socket, and the gold triangle on CPU should point towards this white triangle. The CPU will fit only in the correct orientation.



## Motherboard Manual

---

**Step 4:** Hold the CPU down firmly, and then close the lever to lock the position.



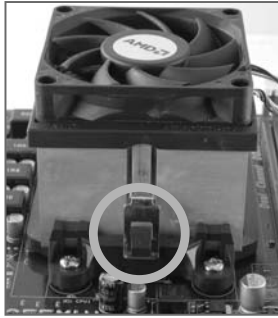
**Note:**

1. This MB is designed for AMD 125W AM3/AM3+ CPU, please check the CPU TDP spec before you install it on MB AM3+ CPU TDP spec from below weblink: <http://www.amd.com/us/products/desktop/processors/amd/fx/Pages/amd/fx-model-number-comparison.aspx>
2. AMD's product warranty does not cover damage caused by overclocking (even when overclocking is enabled via AMD OverDrive™ software). <http://www.amd.com/us/products/desktop/processors/amd/fx/Pages/amd/fx.aspx>
3. Due to the AMD AM3+ CPU designation, we strongly recommend you use AMD original box CPU fan and add an extra system fan inside the chassis.



## 2.2 INSTALL A HEATSINK

**Step 1:** Place the heatsink and fan assembly onto the retention frame. Match the heatsink clip with the socket mounting-lug. Hook the spring clip to the mounting-lug.



**Step 2:** On the other side, push the retention clip straight down to lock into the plastic lug on the retention frame, and then press down the locker until it stops.



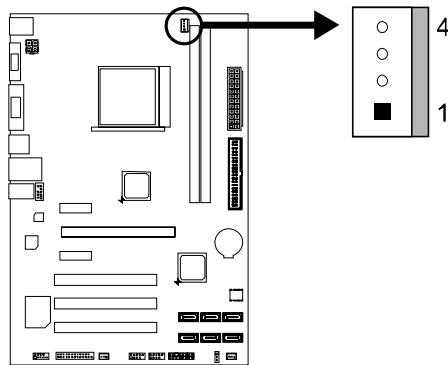
**Note1:** Do not forget to connect the CPU fan connector.

**Note2:** For proper installation, please kindly refer to the installation manual of your CPU heatsink.

## 2.3 FAN HEADERS

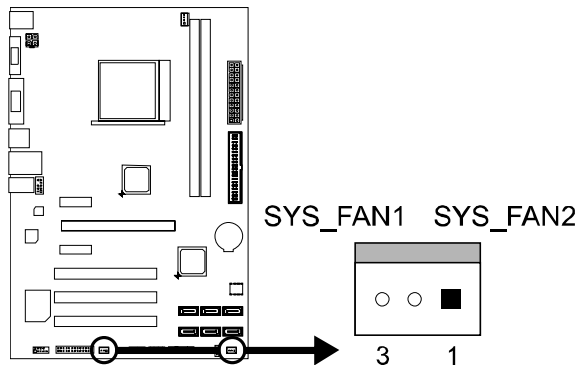
These fan headers support cooling-fans built in the computer. The fan cable and connector may be different due to the fan manufacturer. Connect the fan cable to the connector while matching the black wire to pin#1.

### CPU\_FAN1: CPU Fan Header



Pin	Assignment
1	Ground
2	+12V
3	FAN RPM rate sense
4	Smart Fan Control (By Fan)

### SYS\_FAN1/2: System Fan Headers

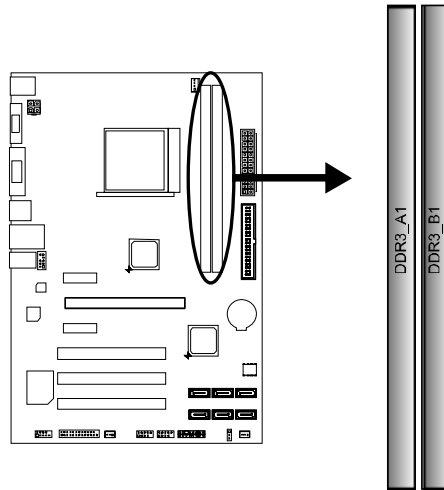


Pin	Assignment
1	Ground
2	+12V
3	FAN RPM rate sense

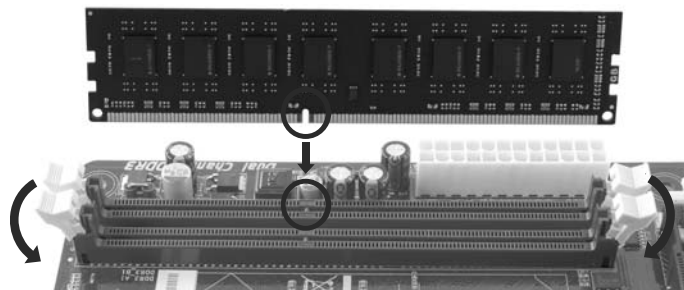
**Note:** CPU\_FAN1, SYS\_FAN1/2 support 4-pin and 3-pin head connectors. When connecting with wires onto connectors, please note that the red wire is the positive and should be connected to pin#2, and the black wire is Ground and should be connected to GND.

## 2.4 INSTALLING SYSTEM MEMORY

### A. Memory Modules



1. Unlock a DIMM slot by pressing the retaining clips outward. Align a DIMM on the slot such that the notch on the DIMM matches the break on the Slot.



2. Insert the DIMM vertically and firmly into the slot until the retaining chip snap back in place and the DIMM is properly seated.



**Note:** If the DIMM does not go in smoothly, do not force it. Pull it all the way out and try again.

**B. Memory Capacity**

DIMM Socket Location	DDR3 Module	Total Memory Size
DDR3_A1	512MB/1GB/2GB/4GB/8GB	Max is 16GB.
DDR3_B1	512MB/1GB/2GB/4GB/8GB	

**C. Dual Channel Memory installation**

Please refer to the following requirements to activate Dual Channel function:  
Install memory module of the same density in pairs, shown in the table.

Dual Channel Status	DDR3_A1	DDR3_B1
Disabled	O	X
Disabled	X	O
Enabled	O	O

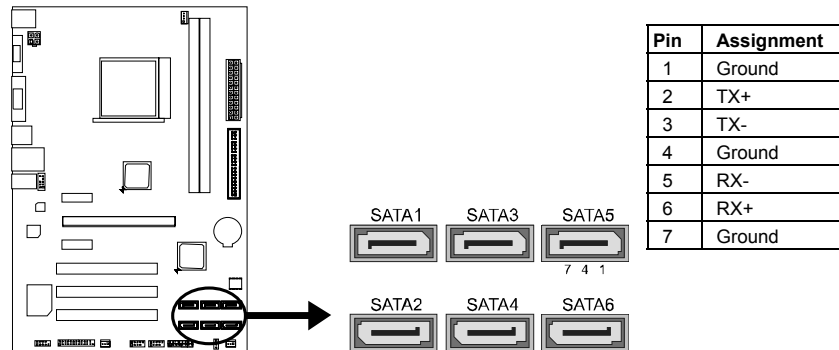
(O means memory installed, X means memory not installed.)

**Note:** The DRAM bus width of the memory module must be the same (x8 or x16)

## 2.5 CONNECTORS AND SLOTS

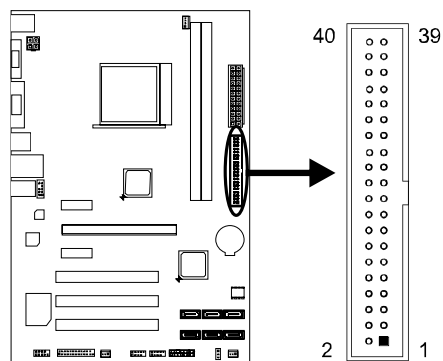
### SATA1~SATA6: Serial ATA 3.0 Gb/s Connectors

These connectors connect to SATA hard disk drives via SATA cables.



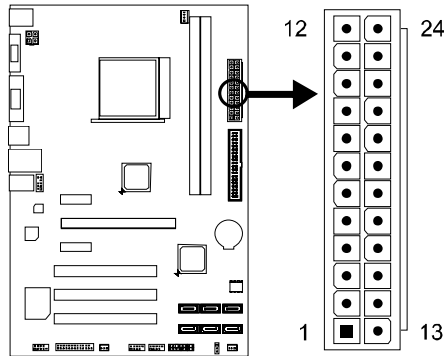
### IDE1: Hard Disk Connector

The motherboard has a 32-bit Enhanced PCI IDE Controller that provides PIO Mode 0~4, Bus Master, and Ultra DMA 33/66/100/133 functionality.



### ATXPWR1: ATX Power Source Connector

This connector allows user to connect 24-pin power connector on the ATX power supply.



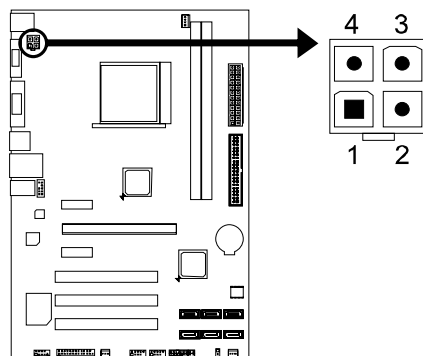
Pin	Assignment	Pin	Assignment
13	+3.3V	1	+3.3V
14	-12V	2	+3.3V
15	Ground	3	Ground
16	PS_ON	4	+5V
17	Ground	5	Ground
18	Ground	6	+5V
19	Ground	7	Ground
20	NC	8	PW_OK
21	+5V	9	Standby Voltage+5V
22	+5V	10	+12V
23	+5V	11	+12V
24	Ground	12	+3.3V

**Note1:** Before you power on the system, please make sure that both ATXPWR1 and ATXPWR2 connectors have been plugged-in.

**Note2:** Insufficient power supplied to the system may result in instability or the peripherals not functioning properly. Use of a PSU with a higher power output is recommended when configuring a system with more power-consuming devices.

### ATXPWR2: ATX Power Source Connector

This connector provides +12V to CPU power circuit.



Pin	Assignment
1	+12V
2	+12V
3	Ground
4	Ground

### PEX16\_1: PCI-Express Gen2 x16 Slot

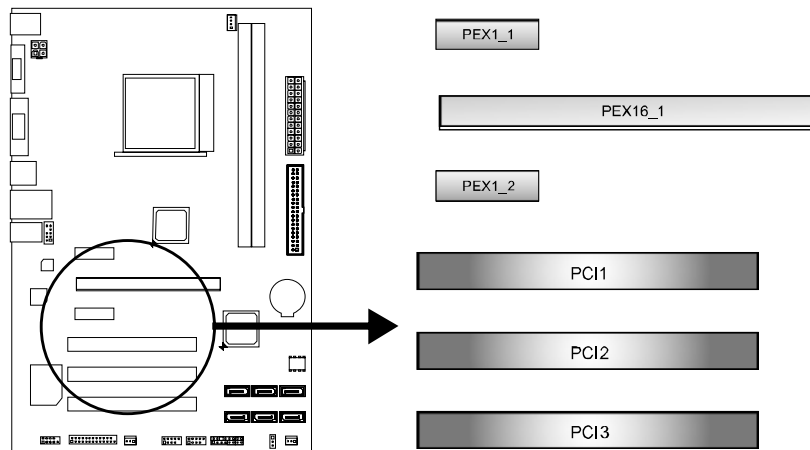
- PCI-Express 2.0 compliant.
- Maximum theoretical realized bandwidth of 8GB/s simultaneously per direction, for an aggregate of 16GB/s totally.
- PCI-Express Gen2 supports a raw bit-rate of 5.0Gb/s on the data pins.

### PEX1\_1/PEX1\_2: PCI-Express Gen2 x1 Slots

- PCI-Express 2.0 compliant.
- Data transfer bandwidth up to 500MB/s per direction; 1GB/s in total

### PCI1/PCI2/PCI3: Peripheral Component Interconnect Slots

This motherboard is equipped with 3 standard PCI slots. PCI stands for Peripheral Component Interconnect, and it is a bus standard for expansion cards.



### Install an Expansion Card

You can install your expansion card by following steps:

1. Read the related expansion card's instruction document before install the expansion card into the computer.
2. Remove your computer's chassis cover, screws and slot bracket from the computer.
3. Place a card in the expansion slot and press down on the card until it is completely seated in the slot.
4. Secure the card's metal bracket to the chassis back panel with a screw.
5. Replace your computer's chassis cover.
6. Power on the computer, if necessary, change BIOS settings for the expansion card.
7. Install related driver for the expansion card.

## CHAPTER 3: HEADERS & JUMPERS SETUP

### 3.1 HOW TO SETUP JUMPERS

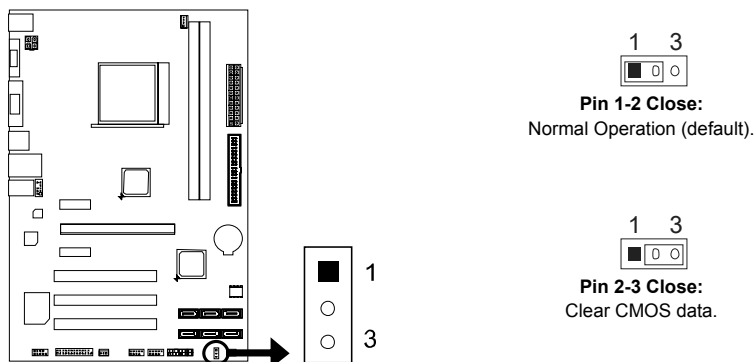
The illustration shows how to set up jumpers. When the jumper cap is placed on pins, the jumper is “close”, if not, that means the jumper is “open”.



### 3.2 DETAIL SETTINGS

#### JCMOS1: Clear CMOS Jumper

Placing the jumper on pin2-3 allows user to restore BIOS safe setting and CMOS data. Please carefully follow the procedures to avoid damaging the motherboard.



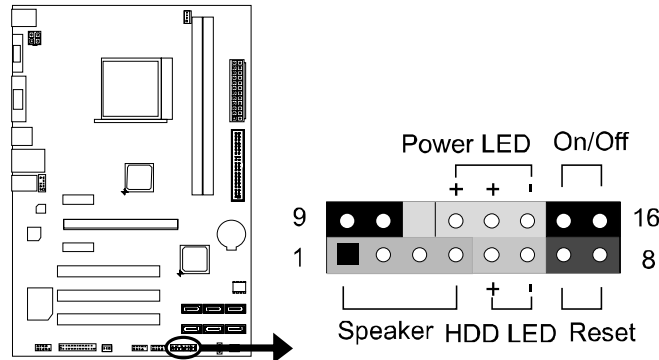
#### ※ Clear CMOS Procedures:

1. Remove AC power line.
2. Set the jumper to “Pin 2-3 close”.
3. Wait for five seconds.
4. Set the jumper to “Pin 1-2 close”.
5. Power on the AC.
6. Load Optimal Defaults and save settings in CMOS.



### PANEL1: Front Panel Header

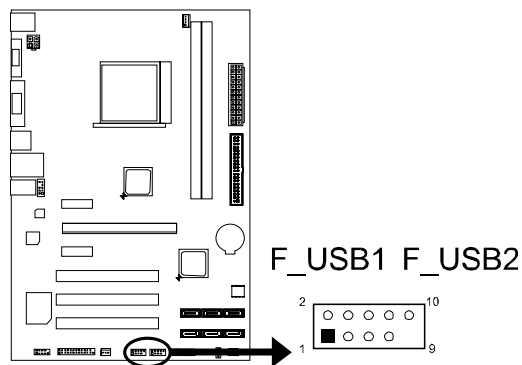
This 16-pin connector includes Power-on, Reset, HDD LED, Power LED, and speaker connection. It allows user to connect the PC case's front panel switch functions.



Pin	Assignment	Function	Pin	Assignment	Function
1	+5V	Speaker Connector	9	N/A	N/A
2	N/A		10	N/A	N/A
3	N/A		11	N/A	N/A
4	Speaker	Hard drive LED	12	Power LED (+)	Power LED
5	HDD LED (+)		13	Power LED (+)	
6	HDD LED (-)		14	Power LED (-)	
7	Ground	Reset button	15	Power button	Power-on button
8	Reset control		16	Ground	

### F\_USB1/F\_USB2: Headers for USB 2.0 Ports at Front Panel

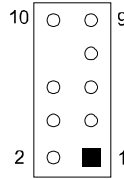
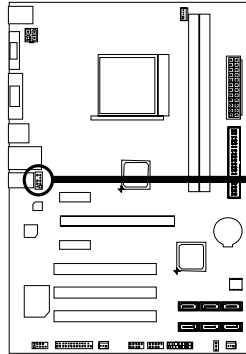
These headers allow user to connect additional USB cable on the PC front panel, and also can be connected with internal USB devices, like USB card reader.



Pin	Assignment
1	+5V (fused)
2	+5V (fused)
3	USB-
4	USB-
5	USB+
6	USB+
7	Ground
8	Ground
9	NC
10	Key

### F\_AUDIO1: Front Panel Audio Header

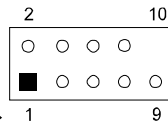
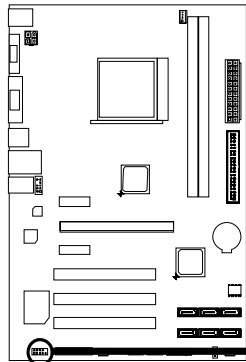
This header allows user to connect the front audio output cable with the PC front panel. This header allows only HD audio front panel connector; AC'97 connector is not acceptable.



Pin	Assignment
1	Mic Left in
2	Ground
3	Mic Right in
4	GPIO
5	Right line in
6	Jack Sense
7	Front Sense
8	Key
9	Left line in
10	Jack Sense

### J\_COM1: Serial port Connector

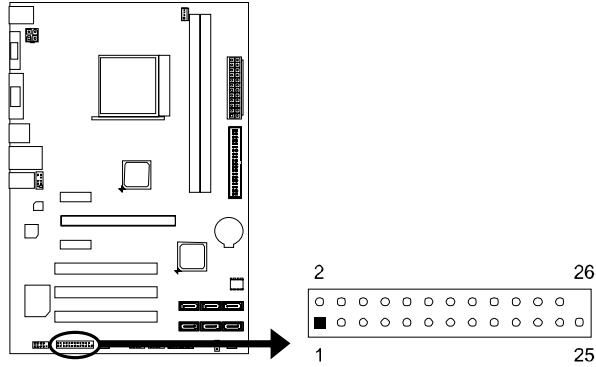
The motherboard has a Serial Port Connector for connecting RS-232 Port.



Pin	Assignment
1	Carrier detect
2	Received data
3	Transmitted data
4	Data terminal ready
5	Signal ground
6	Data set ready
7	Request to send
8	Clear to send
9	Ring indicator
10	NC

## J\_PRINT1: Printer Port Connector

This header allows you to connector printer on the PC.



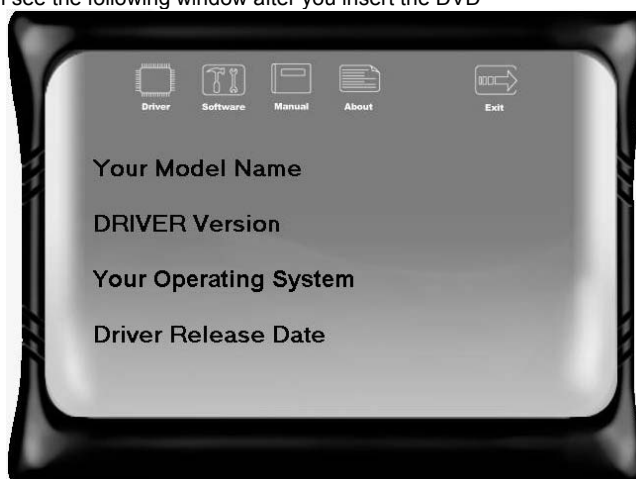
Pin	Assignment	Pin	Assignment
1	-Strobe	14	Ground
2	-ALF	15	Data 6
3	Data 0	16	Ground
4	-Error	17	Data 7
5	Data 1	18	Ground
6	-Init	19	-ACK
7	Data 2	20	Ground
8	-Sctin	21	Busy
9	Data 3	22	Ground
10	Ground	23	PE
11	Data 4	24	Ground
12	Ground	25	SCLT
13	Data 5	26	Key

## CHAPTER 4: USEFUL HELP

### 4.1 DRIVER INSTALLATION NOTE

After you installed your operating system, please insert the Fully Setup Driver DVD into your optical drive and install the driver for better system performance.

You will see the following window after you insert the DVD



The setup guide will auto detect your motherboard and operating system.

**Note:** If this window didn't show up after you insert the Driver DVD, please use file browser to locate and execute the file SETUP.EXE under your optical drive.

#### A. Driver Installation

To install the driver, please click on the Driver icon. The setup guide will list the compatible driver for your motherboard and operating system. Click on each device driver to launch the installation program.

#### B. Software Installation

To install the software, please click on the Software icon. The setup guide will list the software available for your system, click on each software title to launch the installation program.

#### C. Manual

Aside from the paperback manual, we also provide manual in the Driver DVD. Click on the Manual icon to browse for available manual.

**Note:** You will need Acrobat Reader to open the manual file. Please download the latest version of Acrobat Reader software from <http://get.adobe.com/reader/>

## 4.2 SOFTWARE

### Installing Software

1. Insert the Setup DVD to the optical drive. The drivers installation program would appear if the Autorun function has been enabled.
2. Select **Software Installation**, and then click on the respective software title.
3. Follow the on-screen instructions to complete the installation.

**Note1:** All the information and content about following software are subject to be changed without notice. For better performance, the software is being continuously updated.

**Note2:** The information and pictures described below are for your reference only. The actual information and settings on board may be slightly different from this manual.

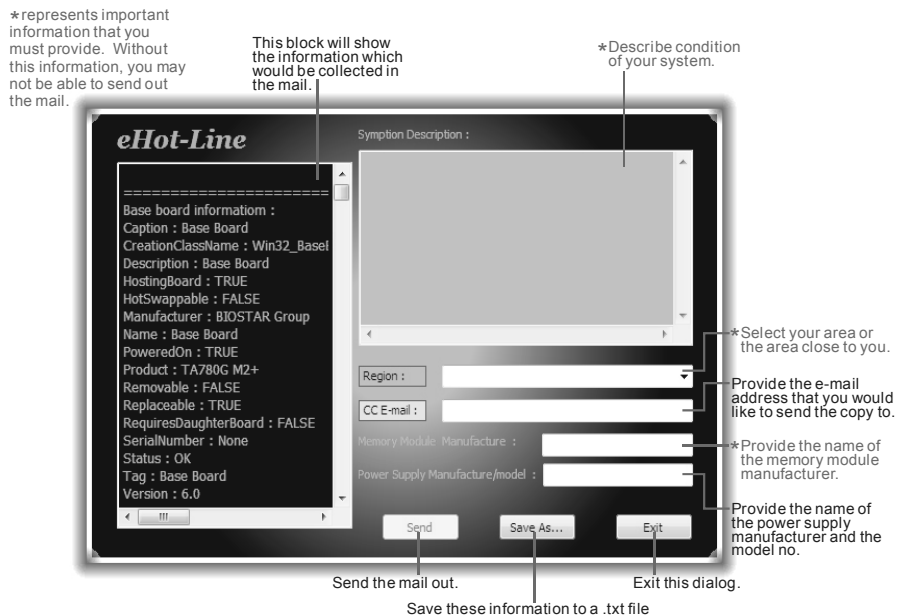
### Launching Software

After the installation process, you will see the software icon "eHOT Line" / "BIOS Update" appears on the desktop. Double-click the icon to launch the utility.

### eHot-Line (Optional)

eHot-Line is a convenient utility that helps you to contact with our Tech-Support system. This utility will collect the system information which is useful for analyzing the problem you may have encountered, and then send these information to our tech-support department to help you fix the problem.

**Note:** Before you use this utility, please set Outlook Express as your default e-mail client application program.



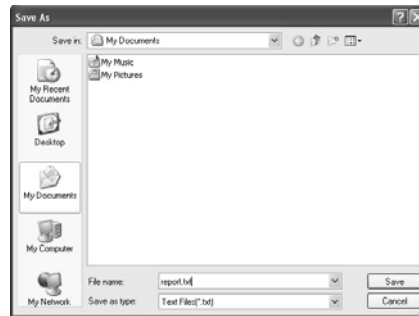
## Motherboard Manual

After filling up this information, click **"Send"** to send the mail out. A warning dialog would appear asking for your confirmation; click **"Send"** to confirm or **"Do Not Send"** to cancel.



If you want to save this information to a .txt file, click **"Save As..."** and then you will see a saving dialog appears asking you to enter file name.

Enter the file name and then click **"Save"**. Your system information will be saved to a .txt file.



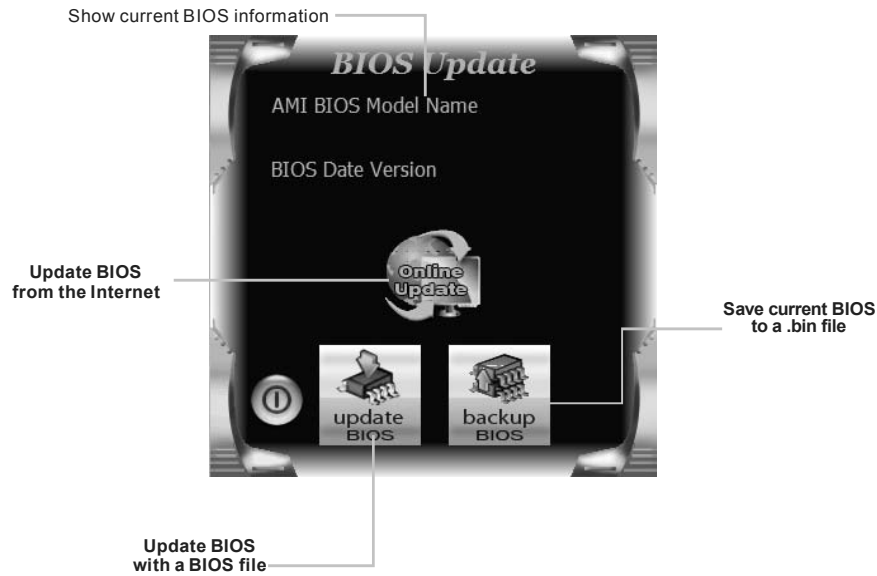
Open the saved .txt file, you will see your system information including motherboard/BIOS/CPU/video/ device/OS information. This information is also included in the sent mail.

**Note1:** We will not share customer's data with any other third parties, so please feel free to provide your system information while using eHot-Line service.

**Note2:** If you are not using Outlook Express as your default e-mail client application, you may need to save the system information to a .txt file and send the file to our tech support with other e-mail application. Go to the following web <http://www.biostar.com.tw/app/en/about/contact.php> for getting our contact information.

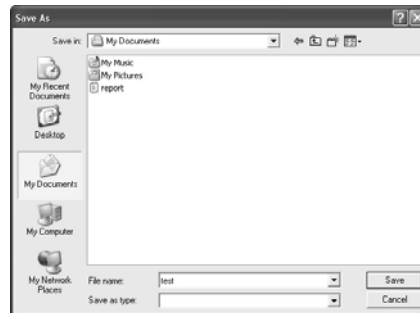
## 4.3 BIOS SETUP

BIOS Update is a convenient utility which allows you to update your motherboard BIOS under Windows system.



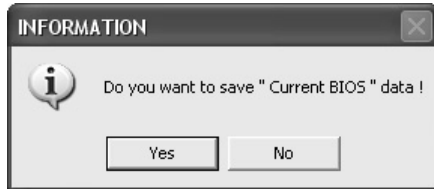
### <Backup BIOS>

Once click on this button, the saving dialog will show. Choose the position to save file and enter file name. (We recommend that the file name should be English/number and no longer than 7 characters.) Then click **Save**.



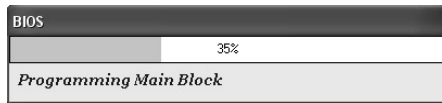
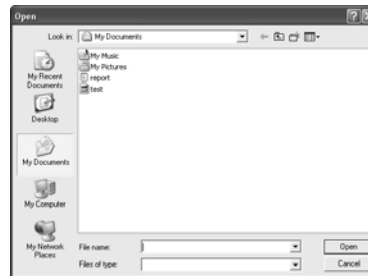
### <Update BIOS>

Before doing this, please download the proper BIOS file from the website.



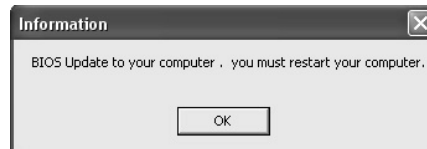
Then click Update BIOS button, a dialog will show for asking you backup current BIOS. Click **Yes** for BIOS backup and refer to the Backup BIOS procedure; or click **No** to skip this procedure.

After the BIOS Backup procedure, the open dialog will show for requesting the BIOS file which is going to be updated. Please choose the proper BIOS file for updating, then click on **Open**.



The utility will update BIOS with the proper BIOS file, and this process may take minutes. Please do not open any other applications during this process.

After the BIOS Update process, click on **OK** to restart the system.



While the system boots up and the full screen logo shows, press **Del** <Delete> key to enter BIOS setup.

In the BIOS setup, use the **Load Optimized Defaults** function and then **Save and Exit Setup** to exit BIOS setup. BIOS Update is completed.



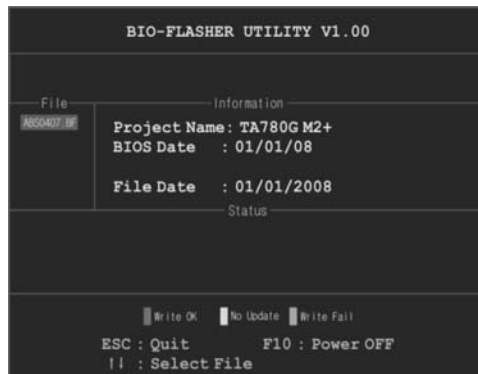
## BIO-Flasher

BIO-Flasher is a BIOS flashing utility providing you an easy and simple way to update your BIOS via USB pen drive or floppy disk.

The BIO-Flasher is built in the BIOS chip. To enter the utility, **press <F12> during the Power-On Self Tests (POST)** procedure while booting up.

### Updating BIOS with BIO-Flasher

1. Go to the website to download the latest BIOS file for the motherboard.
2. Then, save the BIOS file into a USB pen drive or a floppy disk.
3. Insert the USB pen drive or the floppy disk that contains the BIOS file to the USB port or the floppy disk drive.
4. Power on or reset the computer and then press **<F12>** during the **POST** process. A select dialog as the picture on the right appears. Select the device contains the BIOS file and press **<Enter>** to enter the utility.



5. The utility will show the BIOS files and their respective information. Select the proper BIOS file and press **<Enter>** then **<Y>** to perform the BIOS update process.

6. After the update process, the utility will ask you to reboot the system. Press **<Y>** to proceed. BIOS update completes.



- This utility only allows storage device with FAT32/16 format and single partition.
- Shutting down or resetting the system while updating the BIOS will lead to system boot failure.

## 4.4 TROUBLESHOOTING

Probable	Solution
<ol style="list-style-type: none"> <li>1. There is no power in the system. Power LED does not shine; the fan of the power supply does not work</li> <li>2. Indicator light on keyboard does not shine.</li> </ol>	<ol style="list-style-type: none"> <li>1. Make sure power cable is securely plugged in.</li> <li>2. Replace cable.</li> <li>3. Contact technical support.</li> </ol>
<p>System is inoperative. Keyboard lights are on, power indicator lights are lit, and hard drives are running.</p>	<p>Using even pressure on both ends of the DIMM, press down firmly until the module snaps into place.</p>
<p>System does not boot from a hard disk drive, but can be booted from optical drive.</p>	<ol style="list-style-type: none"> <li>1. Check cable running from disk to disk controller board. Make sure both ends are securely plugged in; check the drive type in the standard CMOS setup.</li> <li>2. Backing up the hard drive is extremely important. All hard disks are capable of breaking down at any time.</li> </ol>
<p>System only boots from an optical drive. Hard disks can be read, applications can be used, but system fails to boot from a hard disk.</p>	<ol style="list-style-type: none"> <li>1. Back up data and applications files.</li> <li>2. Reformat the hard drive. Re-install applications and data using backup disks.</li> </ol>
<p>Screen message shows "Invalid Configuration" or "CMOS Failure."</p>	<p>Review system's equipment. Make sure correct information is in setup.</p>
<p>System cannot boot after user installs a second hard drive.</p>	<ol style="list-style-type: none"> <li>1. Set master/slave jumpers correctly.</li> <li>2. Run SETUP program and select correct drive types. Call the drive manufacturers for compatibility with other drives.</li> </ol>

### **CPU Overheated**

If the system shutdown automatically after power on system for seconds, that means the CPU protection function has been activated.

When the CPU is over heated, the motherboard will shutdown automatically to avoid a damage of the CPU, and the system may not power on again.

In this case, please double check:

1. The CPU cooler surface is placed evenly with the CPU surface.
2. CPU fan is rotated normally.
3. CPU fan speed is fulfilling with the CPU speed.

After confirmed, please follow steps below to relief the CPU protection function.

1. Remove the power cord from power supply for seconds.
2. Wait for seconds.
3. Plug in the power cord and boot up the system.

Or you can:

1. Clear the CMOS data.  
(See "Close CMOS Header: JCMOS1" section)
2. Wait for seconds.
3. Power on the system again.

## 4.5 RAID FUNCTION

### Operating System

Supports Windows Vista , Windows 7 and Windows 8.

### Raid Arrays

RAID supports the following types of RAID arrays:

**RAID 0:** RAID 0 defines a disk striping scheme that improves disk read and write times for many applications.

**RAID 1:** RAID 1 defines techniques for mirroring data.

**RAID 10:** RAID 10 combines the techniques used in RAID 0 and RAID 1.

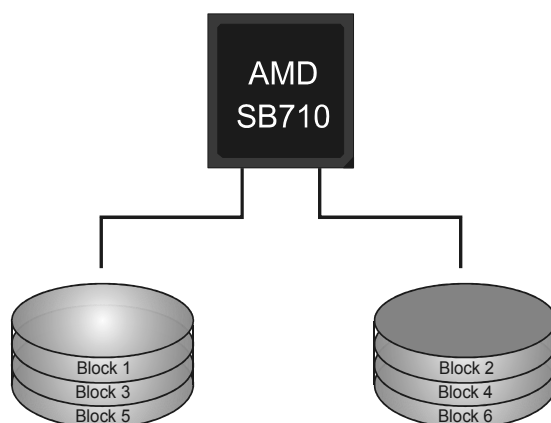
### RAID Definitions

#### **RAID 0:**

The controller “stripes” data across multiple drives in a RAID 0 array system. It breaks up a large file into smaller blocks and performs disk reads and writes across multiple drives in parallel. The size of each block is determined by the stripe size parameter, which you set during the creation of the RAID set based on the system environment. This technique reduces overall disk access time and offers high bandwidth.

#### Features and Benefits

- **Drives:** Minimum 1, and maximum is up to 6 or 8. Depending on the platform.
- **Uses:** Intended for non-critical data requiring high data throughput, or any environment that does not require fault tolerance.
- **Benefits:** provides increased data throughput, especially for large files. No capacity loss penalty for parity.
- **Drawbacks:** Does not deliver any fault tolerance. If any drive in the array fails, all data is lost.
- **Fault Tolerance:** No.



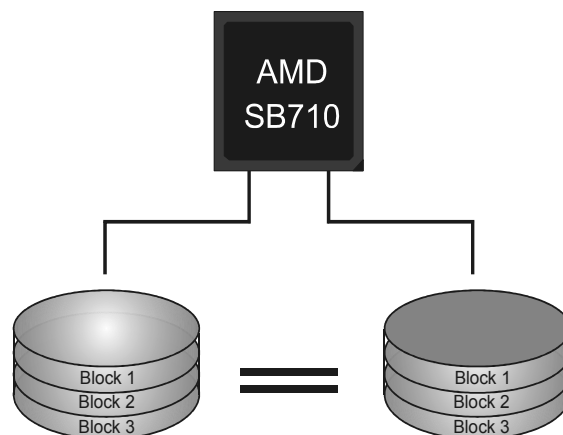
**RAID 1:**

Every read and write is actually carried out in parallel across 2 disk drives in a RAID 1 array system. The mirrored (backup) copy of the data can reside on the same disk or on a second redundant drive in the array. RAID 1 provides a hot-standby copy of data if the active volume or drive is corrupted or becomes unavailable because of a hardware failure.

RAID techniques can be applied for high-availability solutions, or as a form of automatic backup that eliminates tedious manual backups to more expensive and less reliable media.

**Features and Benefits**

- **Drives:** Minimum 2, and maximum is 2.
- **Uses:** RAID 1 is ideal for small databases or any other application that requires fault tolerance and minimal capacity.
- **Benefits:** Provides 100% data redundancy. Should one drive fail, the controller switches to the other drive.
- **Drawbacks:** Requires 2 drives for the storage space of one drive. Performance is impaired during drive rebuilds.
- **Fault Tolerance:** Yes.

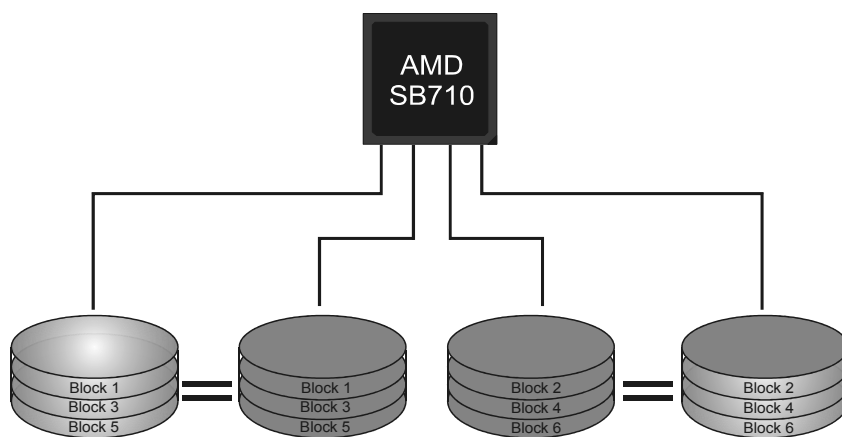


**RAID 10:**

RAID 1 drives can be striped using RAID 0 techniques. Resulting in a RAID 10 solution for improved resiliency, performance and rebuild performance.

**Features and Benefits**

- **Drives:** Minimum 4, and maximum is 6 or 8, depending on the platform.
- **Benefits:** Optimizes for both fault tolerance and performance, allowing for automatic redundancy. May be simultaneously used with other RAID levels in an array, and allows for spare disks.
- **Drawbacks:** Requires twice the available disk space for data redundancy, the same as RAID level 1.
- **Fault Tolerance:** Yes.



This Page Intentionally Left Blank

## APPENDIX: SPEC IN OTHER LANGUAGES

### GERMAN

Spezifikationen		
CPU	Socket AM3 / AM3+ AMD Sempron/Athlon II / Phenom II / FX Prozessoren (Maximales Watt: 125W)	Die AMD 64-Architektur unterstützt eine 32-Bit- und 64-Bit-Datenverarbeitung Unterstützt Hyper Transport 3.0
FSB	Unterstützt Hyper Transport 3.0 mit einer Bandbreite von bis zu 4.4 GT/s	
Chipsatz	AMD 760G AMD SB710	
Super E/A	ITE8728F-BX Bietet die häufig verwendeten alten Super E/A-Funktionen.	Low Pin Count-Schnittstelle Umgebungskontrolle, Hardware-Überwachung "Smart Guardian"-Funktion von ITE
Arbeitsspeiche r	DDR3 DIMM-Steckplätze x 2 Max. 16GB Arbeitsspeicher Jeder DIMM unterstützt 512MB/1GB/ 2GB/4GB/8GB DDR3.	Dual-Kanal DDR3 Speichermodule, Unterstützt DDR3 800/1066/1333/1600(OC)/1800(OC für AM3-CPU-only) registrierte DIMMs. ECC DIMMs werden nicht unterstützt.
Grafik	Integrierter AMD 760G-Chipsatz	Max. 1024MB gemeinsam benutzter Videospeicher
SATA	Integrierter Serial ATA-Controller	Datentransferate bis zu 3 Gb/s Konform mit der SATA-Spezifikation Version 2.0.
LAN	Realtek RTL 8111F	10 / 100 / 1000 Mb/s Auto-Negotiation
HD Audio-Unterstützung	ALC662	5.1-Kanal-Audioausgabe Unterstützt High-Definition Audio
Steckplätze	PCI Express X16 Steckplatz x1 PCI Express X1 Steckplatz x2 PCI-Steckplatz x3	
Onboard-Anschluss	SATA-Anschluss x6 IDE-Anschluss x1 Fronttafelanschluss x1 Front-Audioanschluss x1 CPU-Lüfter-Sockel x1 System-Lüfter-Sockel x2 "CMOS löschen"-Sockel x1 USB-Anschluss x2 Stromanschluss (24-polig) x1 Stromanschluss (4-polig) x1 Serieller Anschluss x1 Druckeranschluss Anschluss x1	Jeder Anschluss unterstützt 1 SATA-Laufwerk Jeder Anschluss unterstützt 2 IDE-Laufwerke Unterstützt die Fronttafel-Funktionen Unterstützt die Fronttafel-Audioanschlussfunktion CPU-Lüfterstromversorgungsanschluss (mit Smart Fan-Funktion) System-Lüfter-Stromversorgungsanschluss Jeder Anschluss unterstützt 2 Fronttafel-USB-Anschlüsse Jeder Anschluss unterstützt 1 Druckeranschluss



<i>Spezifikationen</i>			
Rückseiten-E/ A	PS/2-Tastatur	x1	
	PS/2-Maus	x1	
	DVI-Anschluss	x1	
	VGA-Anschluss	x1	
	LAN-Anschluss	x1	
	USB-Anschluss	x4	
	Audioanschluss	x3	
Platinengröße	200 mm (B) X 295 mm (L)		
Sonderfunktionen	Unterstützt RAID 0 / 1 / 10		
OS-Unterstützung	Windows XP / Vista / 7 / 8		Biostar behält sich das Recht vor, ohne Ankündigung die Unterstützung für ein Betriebssystem hinzuzufügen oder zu entfernen.

**FRENCH**

SPEC		
UC	Socket AM3 / AM3+ Processeurs AMD Sempron/Athlon II / Phenom II / FX (Watt maximum : 125W)	L'architecture AMD 64 permet le calcul 32 et 64 bits Prend en charge Hyper Transport 3.0
Bus frontal	Prend en charge Hyper Transport 3.0 jusqu'à une bande passante de 4.4 GT/s	
Chipset	AMD 760G AMD SB710	
Super E/S	ITE 8728F-BX Fournit la fonctionnalité de Super E/S patrimoniales la plus utilisée.	Interface à faible compte de broches Initiatives de contrôle environnementales, Moniteur de matériel Fonction "Gardien intelligent" de l'ITE
Mémoire principale	Fentes DDR3 DIMM x 2 Capacité mémoire maximale de 16Go Chaque DIMM prend en charge des DDR3 de 512Mo/1Go/2Go/4Go/8Go	Module de mémoire DDR3 à mode à double voie Prend en charge la DDR3 800/1066/1333/1600(OC)/1866(OC pour les processeurs AM3 uniquement) Les DIMM à registres et DIMM avec code correcteurs d'erreurs ne sont pas prises en charge
Graphiques	Intégré dans le chipset AMD 760G	Mémoire vidéo partagée maximale de 1024 Mo
SATA	Contrôleur Serial ATA intégré	Taux de transfert jusqu'à 3 Go/s. Conforme à la spécification SATA Version 2.0
LAN	Realtek RTL 8111F	10 / 100 / 1000 Mb/s négociation automatique
Prise en charge audio HD	ALC662	Sortie audio à 5.1 voies Prise en charge de l'audio haute définition
Fentes	Fente PCI Express X16 x1 Fente PCI Express X1 x2 Fente PCI x3	
Connecteur embarqué	Connecteur SATA x6 Connecteur IDE x1 Connecteur du panneau avant x1 Connecteur Audio du panneau avant x1 Embase de ventilateur UC x1 Embase de ventilateur système x2 Embase d'effacement CMOS x1 Connecteur USB x2 Connecteur d'alimentation (24 broches) x1	Chaque connecteur prend en charge 1 périphérique SATA Chaque connecteur prend en charge 2 périphériques IDE Prend en charge les équipements du panneau avant Prend en charge la fonction audio du panneau avant Alimentation électrique du ventilateur UC (avec fonction de ventilateur intelligent) Alimentation électrique du ventilateur système Chaque connecteur prend en charge 2 ports USB de panneau avant

SPEC			
	Connecteur d'alimentation (4 broches)	x1	
	Port série	x1	
	Connecteur de Port d'imprimante	x1	Chaque connector prend en charge 1 Port d'imprimante
E/S du panneau arrière	Clavier PS/2	x1	
	Souris PS/2	x1	
	Port DVI	x1	
	Port VGA	x1	
	Port LAN	x1	
	Port USB	x4	
	Fiche audio	x3	
Dimensions de la carte	200 mm (l) X 295 mm (H)		
Fonctionnalités spéciales	Prise en charge RAID 0 / 1 / 10		
Support SE	Windows XP / Vista / 7 / 8		Biostar se réserve le droit d'ajouter ou de supprimer le support de SE avec ou sans préavis.

## ITALIAN

SPECIFICA		
CPU	Socket AM3 / AM3+ Processori AMD Sempron/Athlon II / Phenom II /FX (Watt massimo: 125W)	L'architettura AMD 64 abilita la computazione 32 e 64 bit Supporto di Hyper Transport 3.0
FSB	Supporto di HyperTransport 3.0 fino a 4.4 GT/s di larghezza di banda	
Chipset	AMD 760G AMD SB710	
Super I/O	ITE 8728F-BX Fornisce le funzionalità legacy Super I/O usate più comunemente.	Interfaccia LPC (Low Pin Count) Funzioni di controllo dell'ambiente: Monitoraggio hardware Funzione "Smart Guardian" di ITE
Memoria principale	Alloggi DIMM DDR3 x 2 Capacità massima della memoria 16GB Ciascun DIMM supporta DDR3 512MB/1GB/2GB/4GB/8GB	Modulo di memoria DDR3 a canale doppio Supporto di DDR3 800/1066/1333/1600(OC)/1800(OC per CPU AM3 solo) DIMM registrati e DIMM ECC non sono supportati
Grafica	Integrata nel Chipset AMD 760G	La memoria video condivisa massima è di 1024MB
SATA	Controller Serial ATA integrato	Velocità di trasferimento dei dati fino a 3 Gb/s. Compatibile specifiche SATA Versione 2.0.
LAN	Realtek RTL8111F	Negoziatore automatico 10 / 100 / 1000 Mb/s
Supporto audio HD	ALC662	Uscita audio 5.1 canali Supporto audio High-Definition (HD)
Alloggi	Alloggio PCI Express X16 x1 Alloggio PCI Express X1 x2 Alloggio PCI x3	
Connettori su scheda	Connettore SATA x6 Connettore IDE x1 Connettore pannello frontale x1 Connettore audio frontale x1 Collettore ventolina CPU x1 Collettore ventolina sistema x2 Collettore cancellazione CMOS x1 Connettore USB x2 Connettore alimentazione (24 pin) x1 Connettore alimentazione (4 pin) x1	Ciascun connettore supporta 1 unità SATA Ciascun connettore supporta 2 unità IDE Supporta i servizi del pannello frontale Supporta la funzione audio pannello frontale Alimentazione ventolina CPU (con funzione Smart Fan) Alimentazione ventolina di sistema Ciascun connettore supporta 2 porte USB pannello frontale

SPECIFICA			
	Porta seriale	x1	
	Connettore Porta stampante	x1	Ciascun connettore supporta 1 Porta stampante
I/O pannello posteriore	Tastiera PS/2	x1	
	Mouse PS/2	x1	
	Porta DVI	x1	
	Porta VGA	x1	
	Porta LAN	x1	
	Porta USB	x4	
	Connettore audio	x3	
Dimensioni scheda	200 mm (larghezza) x 295 mm (altezza)		
Caratteristiche speciali	Supporto RAID 0 / 1 / 10		
Sistemi operativi supportati	Windows XP / Vista / 7 / 8		Biostar si riserva il diritto di aggiungere o rimuovere il supporto di qualsiasi sistema operativo senza preavviso.

**SPANISH**

<i>Especificación</i>		
CPU	Conector AM3 / AM3+ Procesadores AMD Sempron/Athlon II / Phenom II /FX (Vatio máximo: 125W)	La arquitectura AMD 64 permite el procesado de 32 y 64 bits Soporta las tecnologías Hyper Transport 3.0
FSB	Admite HyperTransport 3.0 con un ancho de banda de hasta 4.4 GT/s	
Conjunto de chips	AMD 760G AMD SB710	
Súper E/S	ITE 8728F-BX Le ofrece las funcionalidades heredadas de uso más común Súper E/S.	Interfaz de cuenta Low Pin Iniciativas de control de entorno, Monitor hardware Función "Guardia inteligente" de ITE
Memoria principal	Ranuras DIMM DDR3 x 2 Capacidad máxima de memoria de 16GB Cada DIMM admite DDR de 512MB/1GB/2GB/4GB/8GB	Módulo de memoria DDR3 de canal Doble Admite DDR3 de 800/1066/1333/1600(OC)/1866(OC para CPU AM3 solamente) No admite DIMM registrados o DIMM compatibles con ECC
Gráficos	Integrados en el conjunto de chips AMD 760G	Memoria máxima de vídeo compartida de 1024 MB
SATA	Controlador ATA Serie Integrado	Tasas de transferencia de hasta 3 Gb/s. Compatible con la versión SATA 2.0.
Red Local	Realtek RTL 8111F	Negociación de 10 / 100 / 1000 Mb/s
Soporte de sonido HD	ALC662	Salida de sonido de 5.1 canales Soporte de sonido Alta Definición
Ranuras	Ranura PCI Express X16 X1 Ranura PCI Express X1 X2 Ranura PCI X3	
Conectores en placa	Conector SATA X6 Conector IDE X1 Conector de panel frontal X1 Conector de sonido frontal X1 Cabecera de ventilador de CPU X1 Cabecera de ventilador de sistema X2 Cabecera de borrado de CMOS X1 Conector USB X2 Conector de alimentación (24 patillas) X1 Conector de alimentación (4 patillas) X1	Cada conector soporta 1 dispositivos SATA Cada conector soporta 2 dispositivos IDE Soporta instalaciones en el panel frontal Soporta funciones de sonido en el panel frontal Fuente de alimentación de ventilador de CPU (con función Smart Fan) Fuente de alimentación de ventilador de sistema Cada conector soporta 2 puertos USB frontales

<i>Especificación</i>			
	Puerto serie	X1	
	Conector Puerto de impresora	X1	Cada conector soporta 1 Puerto de impresora
Panel trasero de E/S	Teclado PS/2	X1	
	Ratón PS/2	X1	
	Puerto DVI	X1	
	Puerto VGA	X1	
	Puerto de red local	X1	
	Puerto USB	X4	
	Conector de sonido	X3	
Tamaño de la placa	200 mm. (A) X 295 Mm. (H)		
Funciones especiales	Admite RAID 0 / 1 / 10		
Soporte de sistema operativo	Windows XP / Vista / 7 / 8		Biostar se reserva el derecho de añadir o retirar el soporte de cualquier SO con o sin aviso previo.

## PORTUGUESE

ESPECIFICAÇÕES		
CPU	Socket AM3 / AM3+ Processadores AMD Sempron/Athlon II / Phenom II /FX (Watt máximo: 125W)	A arquitectura AMD 64 permite uma computação de 32 e 64 bits Suporta as tecnologias Hyper Transport 3.0
FSB	Suporta a tecnologia HyperTransport 2.0 com uma largura de banda até 4.4 GT/s	
Chipset	AMD 760G AMD SB710	
Especificação do Super I/O	ITE 8728F-BX Proporciona as funcionalidades mais utilizadas em termos da especificação Super I/O.	Interface LPC (Low Pin Count). Iniciativas para controlo do ambiente Monitorização do hardware Função "Smart Guardian" da ITE
Memória principal	Ranhuras DIMM DDR3 x2 Capacidade máxima de memória: 16GB Cada módulo DIMM suporta uma memória DDR3 de 512MB/1GB/ 2GB/4GB/8GB	Módulo de memória DDR3 de canal duplo Suporta módulos DDR3 800/1066/1333/1600(OC)/1866(OC para o CPU AM3 só) Os módulos DIMM registados e os DIMM ECC não são suportados
Placa gráfica	Integrada no chipset AMD 760G	Memória de vídeo máxima partilhada: 1024 MB
SATA	Controlador Serial ATA integrado	Velocidades de transmissão de dados até 3 Gb/s. Compatibilidade com a especificação SATA versão 2.0.
LAN	Realtek RTL 8111F	Auto negociação de 10 / 100 / 1000 Mb/s
Suporte para áudio de alta definição	ALC662	Saída de áudio de 5.1 canais Suporta a especificação High-Definition Audio
Ranhuras	Ranhura PCI Express X16 x1 Ranhura PCI Express X1 x2 Ranhura PCI x3	
Conectores na placa	Conector SATA x6 Conector IDE x1 Conector do painel frontal x1 Conector de áudio frontal x1 Conector da ventoinha da CPU x1 Conector da ventoinha do sistema x2 Conector para limpeza do CMOS x1 Conector USB x2 Conector de alimentação (24 pinos) x1	Cada conector suporta 1 dispositivo SATA Cada conector suporta 2 dispositivos IDE Para suporte de várias funções no painel frontal Suporta a função de áudio no painel frontal Alimentação da ventoinha da CPU (com a função Smart Fan) Alimentação da ventoinha do sistema Cada conector suporta 2 portas USB no painel frontal



ESPECIFICAÇÕES			
	Conector de alimentação (4 pinos)	x1	
	Porta série	x1	
	Conector da para impressora	x1	Cada conector suporta 1 Porta para impressora
Entradas/Saídas no painel traseiro	Teclado PS/2	x1	
	Rato PS/2	x1	
	Porta DVI	x1	
	Porta VGA	x1	
	Porta LAN	x1	
	Porta USB	x4	
	Tomada de áudio	x3	
Tamanho da placa	200 mm (L) X 295 mm (A)		
Características especiais	Suporta as funções RAID 0 / 1 / 10		
Sistemas operativos suportados	Windows XP / Vista / 7 / 8		A Biostar reserva-se o direito de adicionar ou remover suporte para qualquer sistema operativo com ou sem aviso prévio.

## POLISH

SPEC		
Procesor	Socket AM3 / AM3+ AMD Sempron/Athlon II / Phenom II / FX Procesory (Maksymalny Watt: 125W)	Architektura AMD 64 umożliwia przetwarzanie 32 i 64 bitowe Obsługa Hyper Transport 3.0
FSB	Obsługa HyperTransport 3.0 o szerokości pasma do 4.4 GT/s	
Chipset	AMD 760G AMD SB710	
Pamięć główna	Gniazda DDR3 DIMM x 2 Maks. wielkość pamięci 16GB Każde gniazdo DIMM obsługuje moduły 512MB/1GB/2GB/4GB/8GB DDR3	Moduł pamięci DDR3 z trybem podwójnego kanału Obsługa DDR3 800/1066/1333/1600(OC)/1866(OC dla procesorów AM3 tylko) Brak obsługi Registered DIMM oraz ECC DIMM
Super I/O	ITE 8728F-BX Zapewnia najbardziej powszechne funkcje Super I/O.	Interfejs Low Pin Count Funkcje kontroli warunków pracy, Monitor HW Funkcja ITE "Smart Guardian"
Grafika	Zintegrowana w chipsecie AMD 760G	Maks. wielkość współdzielonej pamięci video wynosi 1024 MB
SATA	Zintegrowany kontroler Serial ATA	Transfer danych do 3 Gb/s. Zgodność ze specyfikacją SATA w wersji 2.0.
LAN	Realtek RTL 8111F	10 / 100 / 1000 Mb/s z automatyczną negocjacją szybkości
Obsługa audio HD	ALC662	5.1 kanałowe wyjście audio Obsługa High-Definition Audio
Gniazda	Gniazdo PCI Express X16 x1 Gniazdo PCI Express X1 x2 Gniazdo PCI x3	
Złącza wbudowane	Złącze SATA x6 Złącze IDE x1 Złącze panela przedniego x1 Przednie złącze audio x1 Złącze główkowe wentylatora procesora x1 Złącze główkowe wentylatora systemowego x2 Złącze główkowe kasowania CMOS x1 Złącze USB x2 Złącze zasilania (24 pinowe) x1 Złącze zasilania (4 pinowe) x1 Port szeregowy x1 Złącze Port drukarki x1	Każde złącze obsługuje 1 urządzenie SATA Każde złącze obsługuje 2 urządzenia IDE Obsługa elementów panela przedniego Obsługa funkcji audio na panelu przednim Zasilanie wentylatora procesora (z funkcją Smart Fan) Zasilanie wentylatora systemowego Każde złącze obsługuje 2 porty USB na panelu przednim Każde złącze obsługuje 1 Port drukarki
Back Panel	Klawiatura PS/2 x1	

SPEC		
I/O	Mysz PS/2	x1
	Port DVI	x1
	Port VGA	x1
	Port LAN	x1
	Port USB	x4
	Gniazdo audio	x3
Wymiary płyty	200 mm (S) X 295 mm (W)	
Funkcje specjalne	Obsługa RAID 0 / 1 / 10	
Obsługa systemu operacyjnego	Windows XP / Vista / 7 / 8	Biostar zastrzega sobie prawo dodawania lub odwoływania obsługi dowolnego systemu operacyjnego bez powiadomienia.

## RUSSIAN

СПЕЦ		
CPU (центральный процессор)	Гнездо AM3 / AM3+ Процессоры AMD Sempron/Athlon II / Phenom II /FX (Максимальный ватт: 125W)	Архитектура AMD 64 разрешать обработка данных на 32 и 64 бит Поддержка Hyper Transport 3.0
FSB	Поддержка HyperTransport 3.0 с пропускной способностью до 4.4 GT/s	
Набор микросхем	AMD 760G AMD SB710	
Основная память	Слоты DDR3 DIMM x 2 Максимальная ёмкость памяти 16ГБ Каждый модуль DIMM поддерживает 512МБ/1ГБ/2ГБ/4ГБ/8ГБ DDR3	Модуль памяти с двуканальным режимом DDR3 Поддержка DDR3 800/1066/1333/1600(OC)/1866(OC для процессоров AM3 только) Не поддерживает зарегистрированные модули DIMM and ECC DIMM
Super I/O	ITE 8728F-BX Обеспечивает наиболее используемые действующие функциональные возможности Super I/O.	Интерфейс с низким количеством выводов Инициативы по охране окружающей среды, Аппаратный монитор Функция ITE "Smart Guardian" (Интеллектуальная защита)
Графика	Встроенная в набор микросхем AMD 760G	Максимальная совместно используемая видео память составляет 1024 МБ
SATA	Встроенное последовательное устройство управления ATA	скорость передачи данных до 3 гигабит/с. Соответствие спецификации SATA версия 2.0.
Локальная сеть	Realtek RTL 8111F	Автоматическое согласование 10 / 100 / 10000 Мб/с
Звуковая поддержка жесткого диска	ALC662	Звуковая поддержка High-Definition 5.1канальный звуковой выход
Слоты	Слот PCI Express X16           x1 Слот PCI Express X1           x2 Слот PCI                           x3	
Встроенный разъём	Разъём SATA                   x6 Разъём IDE                    x1 Разъём на лицевой панели   x1 Входной звуковой разъём    x1 Контактирующее приспособление вентилятора центрального процессора                    x1	Каждый разъём поддерживает 1 устройство SATA Каждый разъём поддерживает 2 встроенных интерфейса накопителей Поддержка устройств на лицевой панели Поддержка звуковых функций на лицевой панели Источник питания для вентилятора центрального процессора (с функцией интеллектуального вентилятора)

СПЕЦ			
	Контактирующее приспособление вентилятора системы	x2	Источник питания для вентилятора системы
	Открытое контактирующее приспособление CMOS	x1	
	USB-разъём	x2	Каждый разъём поддерживает 2 USB-порта на лицевой панели
	Разъём питания (24 вывод)	x1	
	Разъём питания (4 вывод)	x1	
	Последовательный порт	x1	
	Разъём Порт подключения принтера	x1	Каждый разъём поддерживает 1 Порт подключения принтера
Задняя панель средств ввода-вывода	Клавиатура PS/2	x1	
	Мышь PS/2	x1	
	Порт DVI	x1	
	Порт VGA	x1	
	Порт LAN	x1	
	USB-порт	x4	
	Гнездо для подключения наушников	x3	
Размер панели	200 мм (Ш) X 295 мм (В)		
Специальные технические характеристики	Поддержка RAID 0 / 1 / 10		
Поддержка OS	Windows XP / Vista / 7 / 8		Bioslar сохраняет за собой право добавлять или удалять средства обеспечения для OS с или без предварительного уведомления.

## ARABIC

المواصفات		
وحدة المعالجة المركزية	AM3+ / AM3 مقبس AMD Sempron/Athlon II / Phenom II / FX (و125W قصوى واط)	إجراء العمليات الحاسوبية بسرعة 32 و64 بت AMD 64 يمكن تقنية و3.0 Hyper Transport تدعم تقنية
النقل الأمامي الجانبي	GT/s يتردد يصل إلى4.4 3.0 HyperTransport تدعم تقنية	
مجموعة الشرائح	AMD 760G AMD SB710	
Super I/O	ITE 8728F-BX الأكثر استخدامًا. Super I/O توفر وظيفة	Low Pin Count Interface تدعم تقنية وسائل التحكم في البيئية: مراقب لمعرفة حالة الأجهزة من ITE من "Smart Guardian" وظيفة
الذاكرة الرئيسية	قناة DDR3 DIMM سعة ذاكرة قصوى 16 جيجا بايت 5/12 سعة DDR3 تدعم ذاكرة من نوع DIMM كل قناة ميجا بايت و1/2 و4 و8 جيجا بايت	عدد2 مزدوجة القناة DDR3 وحدة ذاكرة سعات 1600/1333/1066/800 (OC) ميجا DDR3 تدعم الذاكرة من نوع (نقط AM3 لمعالجات OC) بايت/1866 ECC وتلك التي لا تتوافق مع DIMM لا تدعم رقائق الذاكرة
بطاقة الرسومات	AMD 760G مدمجة في رقائق	ميجا بايت1024 أقصى سعة لذاكرة الفيديو المشتركة
SATA	متكامل Serial ATA متحكم	جيجابت/ثانية3 نقل البيانات بسرعة تصل إلى 2.0 الإصدار SATA مطابقة لمواصفات
شبكة داخلية	Realtek RTL 8111F	10/100/1000 الميغابايت تفويض ثنائية / ميجا
دعم الصوت عالي التعريف	ALC662	قنوات لخرج الصوت5.1 تدعم تقنية الصوت على التعريف من
الفتحات	قناة PCI Express x16 قناة PCI Express x1 قناة PCI	عدد1 عدد2 عدد3
المنفذ على سطح اللوحة	منفذ SATA منفذ IDE منفذ اللوحة الأمامية منفذ الصوت الأمامي وصلة مروحة وحدة المعالجة المركزية وصلة مروحة النظام وصلة مسح CMOS منفذ USB منفذ توصيل الطاقة (24 دبوس) منفذ توصيل الطاقة (4 دبوس) منفذ تسلسلي منفذ طاقة	عدد6 عدد1 عدد1 عدد1 عدد1 عدد2 عدد1 عدد2 عدد1 عدد1 عدد1 عدد1 عدد1
		SATA يدعم كل منفذ واحد من أجهزة IDE يدعم كل منفذ اثنين من أجهزة يدعم تجهيزات اللوحة الأمامية يدعم وظيفة الصوت بالوحة الأمامية Smart Fan لتوصيل الطاقة لمروحة وحدة المعالجة مع وظيفة لتوصيل الطاقة لمروحة النظام بالوحة الأمامية USB يدعم كل منفذ قطني

المواصفات			
	عدد 1	لوحة مفاتيح PS/2	منفذ دخل/خروج للوحه الخلفية
	عدد 1	مؤوس PS/2	
	عدد 1	منفذ DVI	
	عدد 1	منفذ VGA	
	عدد 1	منفذ شبكة اتصال محلية	
	عدد 4	منفذ USB	
	عدد 3	مقيس صوت	
		حجم اللوحة	200 مم (عرض) X 295 مم (ارتفاع)
		مزايا خاصة	RAID 0 / 1 / 10 دعم تقنية
		دعم أنظمة التشغيل	Windows XP / Vista / 7 / 8
بحقها في اضافة أو ازالة الدعم لأي نظام تشغيل بإخطار أو بدون إخطار. <b>BioStar</b> يحتفظ			

## JAPANESE

仕様		
CPU	Socket AM3 / AM3+ AMD Sempron/Athlon II / Phenom II / FX プロセッサ (最高のワット: 125W)	AMD 64アーキテクチャでは 32ビットと64ビット計算が可能です ハイパートランスポート3.0とクールアンドクワイアットをサポートします
FSB	4.4 GT/sのバンド幅までハイパートランスポート3.0をサポートします	
チップセット	AMD 760G AMD SB710	
メインメモリ	DDR3 DIMMスロット x2 最大メモリ容量16GB 各DIMMは 512MB/1GB/2GB/4GB/8GB DDR3をサポート	デュアル チャンネルモードDDR3メモリモジュール DDR3 800/1066/1333/1600(OC)/1866 (唯一のAM3 CPUのOC) をサポート 登録済みDIMMとECC DIMMはサポートされません
Super I/O	ITE 8728F-BX もともと一般に使用されるレガシーSuper I/O機能を採用しています。	低ピンカウントインターフェイス 環境コントロールレイニシアチブ、 HWモニター ITEの「スマートガーディアン」機能
グラフィックス	AMD 760Gチップセットに統合	最大の共有ビデオメモリは1024MBです
SATA	統合シリアルATAコントローラ	最高3Gb/秒のデータ転送速度 SATAバージョン2.0仕様に準拠。
LAN	Realtek RTL 8111F	10 / 100 / 1000 Mb/秒のオートネゴシエーション
HDオーディオのサポート	ALC662	5.1チャンネルオーディオアウト ハイデフィニションオーディオのサポート
スロット	PCI Express X16スロット x1 PCI Express X1スロット x2 PCIスロット x3	
オンボードコネクタ	SATAコネクタ x6 IDEコネクタ x1 フロントパネルコネクタ x1 フロントオーディオコネクタ x1 CPUファンヘッダ x1 システムファンヘッダ x2 CMOS クリアヘッダ x1 USBコネクタ x2	各コネクタは1つのSATAデバイスをサポートします 各コネクタは2つのIDEデバイスをサポートします フロントパネル機能をサポートします フロントパネルオーディオ機能をサポートします CPUファン電源装置(スマートファン機能を搭載) システムファン電源装置 各コネクタは2つのフロントパネルUSBポートをサポートします



仕様			
	電源コネクタ(24ピン)	x1	各コネクタは1つのプリンタポートをサポートします
	電源コネクタ(4ピン)	x1	
	シリアルポート	x1	
	プリンタポートコネクタ	x1	
背面パネル I/O	PS/2キーボード	x1	
	PS/2マウス	x1	
	DVIポート	x1	
	VGAポート	x1	
	LANポート	x1	
	USBポート	x4	
	オーディオジャック	x3	
ボードサイズ	200 mm (幅) X 295 mm (高さ)		
特殊機能	RAID 0 / 1 / 10 のサポート		
OSサポート	Windows XP / Vista / 7 / 8	Biostarは事前のサポートなしにOSサポートを追加または削除する権利を留保します。	

2013/01/15